

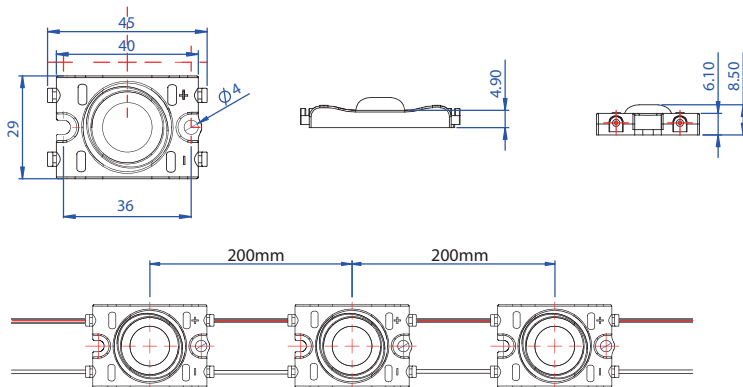
THE WIDE mini, THE POWERFUL LIGHTING SOLUTION

PHILIPS LUMILEDS	IP65	1.4W	1 cut 	 60~200mm
DC12V	42,500H LIFETIME	CE	RoHS	

- Guaranteed life time up to 42,500 hours with 70% lighting output
*24 hour constant load may result less operating hours with lower lighting output. Estimated lifetime is based on normal usage of 10 hours per day.
- Uniform color temperature by strictly controlled bin rank system
- COST-WISE solution for low-profile channel letters and light boxes
- 145° of viewing angle
- IP65 rating - Prevents water & dust penetration
- Easier installation with mounting holes and 3M adhesive tapes on back

PHYSICAL

Length : 45mm
Width : 29mm
Thickness : 8.5mm
Weight : 15g
Module Pitch : 200mm



OPTICAL CHARACTERISTICS

Available Color	Luminous Flux (lm)			CCT(Kelvin) & Dominant wave length			Viewing Angle
	Min	Typical	Max	Min	Typical	Max	2Θ _{1/2}
Daylight White		88		6,000K	6,500K	7,000K	145
Warm White		79			3,000K		145

ELECTRICAL CHARACTERISTICS

Current dissipation : 130mA
 Power Consumption : 1.4W
 Quantity for maximum connection in serial : 30 modules
 Operating power : DC 12V

THERMAL

Cooling : Ambient air
 Operating temperature : -20~50°C
 Storage temperature : -20~60°C

SAFETY FEATURES

IP65 : Prevents water & dust penetration

CONSTRUCTION

LED Lamp : 3030 package
 PCB : FR-4 double-layered
 Body : ABS
 Lead wire : AWG18
 Pre-mounted 3M adhesive tapes

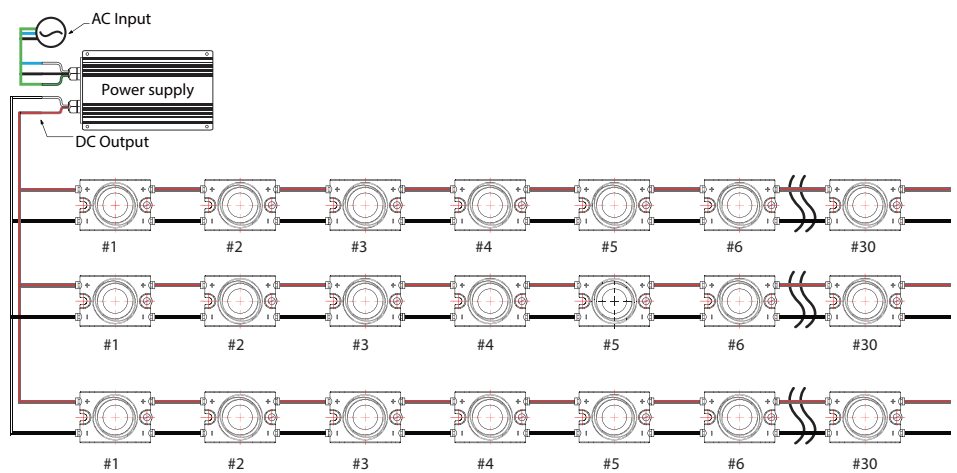
APPLICATIONS

Specially good for ;
 Large Scale Channel letters - open & closed cover
 Flex faced cabinet illumination
 Duplex Signage Light illumination
 Signage and illuminated advertising with depth, 60mm~200mm

APPROVAL

EN 55015/A2 : 2009
 EN 61547/2009
 EN 62031/2008
 EN 62471/2006

WIRING GUIDE



Specifications subject to change without notice